

2024 annual report to the Community

# Newland Park Kindergarten

Newland Park Kindergarten number: 4643

Partnership: Central East



Preschool director:

Maddy Emmett

Date of endorsement:

25/02/2025



Government  
of South Australia  
Department for Education

# Context Statement

Information about Newland Park Kindergarten is available on the centres website, as well as the Australian Childrens Education and Care Quality Authority (ACECQA) website.

## Governing Council Report

The governing council for 2024 consisted of 4 to 7 parents throughout the year, where we had a fairly relaxed role in reviewing and approving 20 financial reports and reviewing and updating 9 kindy policies, including amending the pupil free days to be evenly spread across both sessions.

Halfway through the year we navigated some challenges with the news that the site would be transitioning to a part time service in 2025. We worked closely with leadership and the staff team to navigate these changes, to consult with the wider community and to negotiate a model of delivery that meets the community needs. This was an unexpected task but something we took very seriously to ensure the smoothest transition for remaining and incoming families.

A highlight was assisting with the family book week event where council members prepared hot chocolate and engaged with the families, encouraging more parents to join the GC and getting to know new mid-year families.

Being part of the GC has been a rewarding opportunity to contribute to our children's kindy experience, as well as increasing connections within the kindy community. All the best for 2025

## Preschool Attendance

	Term 1	Term 2	Term 3	Term 4
2021 centre		88.5%	97.2%	95.4%
2022 centre	86.3%	79.9%	89.3%	85.8%
2023 centre	83.4%	84.2%	81.9%	87.4%
2024 centre	88.5%		81.4%	

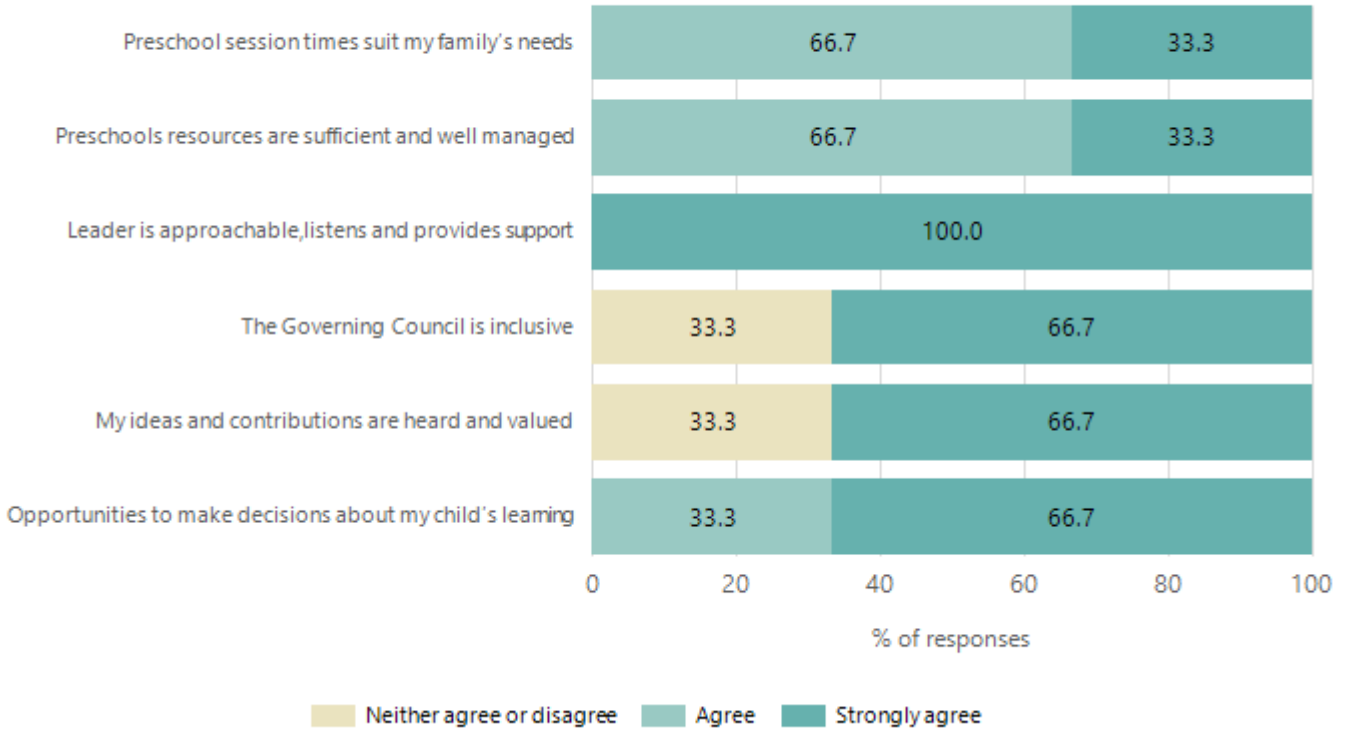
Based on attendances recorded in the two-week reference period each term. Data for eligible enrolments as described in the department's Enrolment policy. Attendance rates may differ to previous reporting with the transfer from calculations based on deemed attendance to actual attendance using booked hours divided by attended hours. Data Source: Department for Education Attendance Data, Semester 1 Report 2024. A blank cell indicates there we no students enrolled.

## Attendance Comment

In South Australia, preschool attendance is not compulsory, but it is strongly encouraged. Preschool gives children the best opportunity to develop skills, which prepare them for school. These benefits include establishing positive routines and habits, friendships and connections as well as developing communication, problem-solving and creative skills. All children are entitled to access a preschool program over 4 terms the year before they start school.

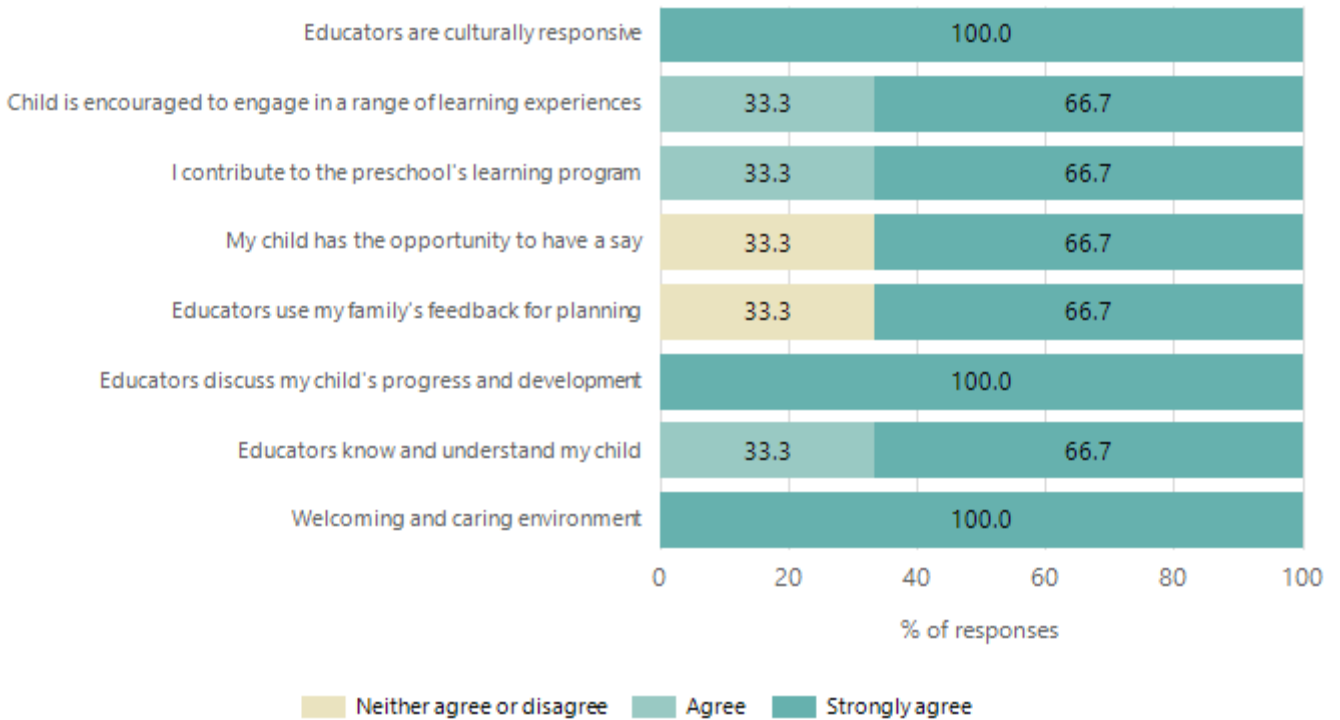
# Preschool Family Opinion Survey

## Governance, Leadership and Management



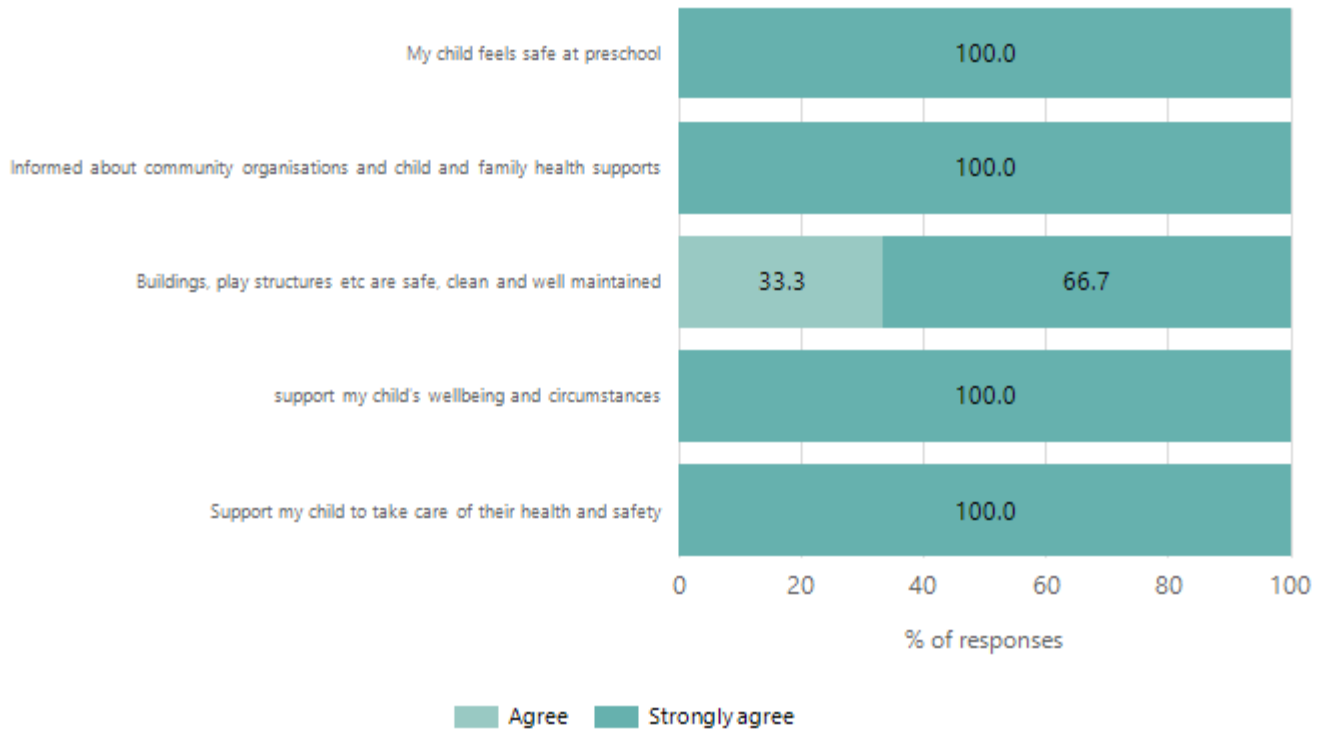
Data Source: 2024 Department for Education Preschool Family Opinions Survey, Term 3 2024.

## Quality of Teaching and Learning



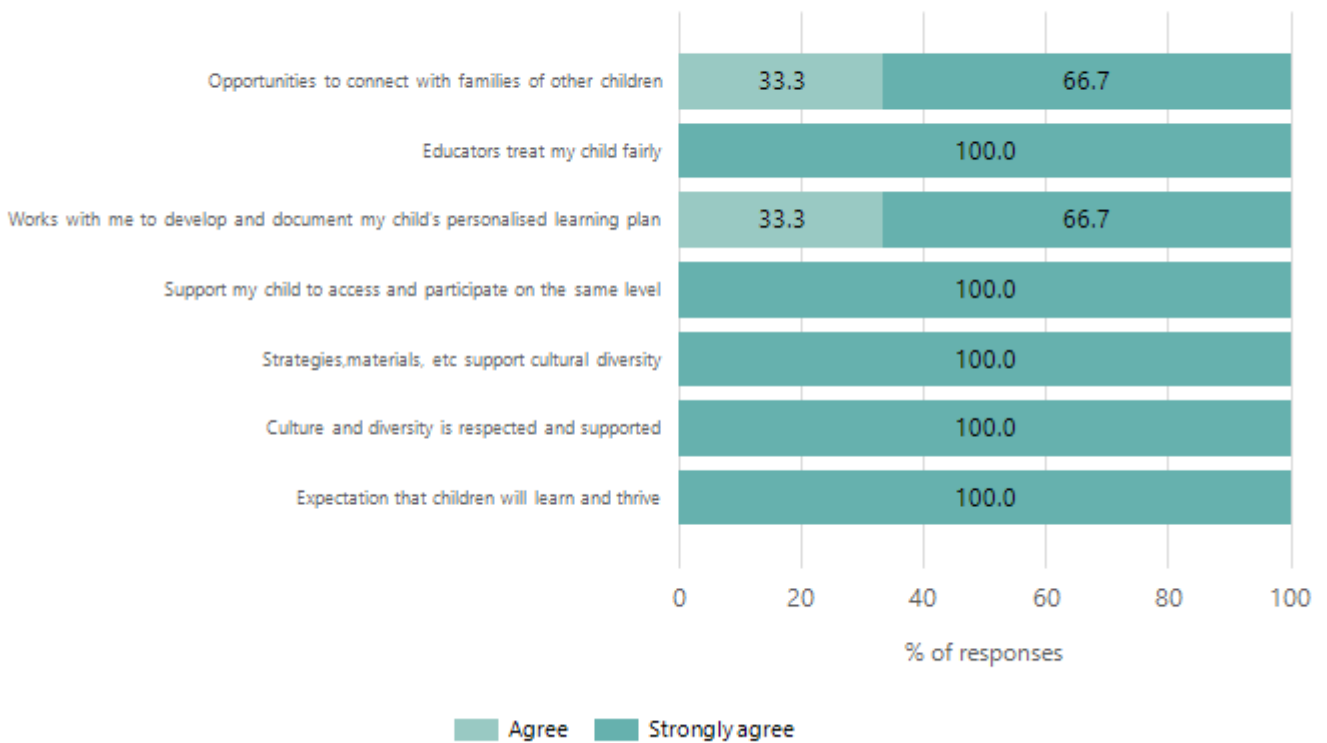
Data Source: 2024 Department for Education Preschool Family Opinions Survey, Term 3 2024.

## Safety, Health and Wellbeing



Data Source: 2024 Department for Education Preschool Family Opinions Survey, Term 3 2024.

## Support and Inclusion



Data Source: 2024 Department for Education Preschool Family Opinions Survey, Term 3 2024.

# Destination Schools

Feeder Schools (Site number - Name)	2022	2023	2024
0249 - Marryatville Primary School			5.5%
0647 - Linden Park Primary School	10.8%	5.5%	
0699 - Burnside Primary School	86.5%	74.6%	83.6%
9999 - Unknown		16.4%	9.1%

Note: The data is collected in term 3. It does not reflect actual schools enrolled in by existing preschool children. A blank cell indicates there was no data for students enrolled.

Data Source: Department for Education Destination Data Report, 2024.

# Highest Qualifications held by the teaching workforce and workforce composition

All teachers at this school are qualified and registered with the SA Teachers Registration Board.

Qualification Level	Number of Qualifications
Bachelor's degrees or Diplomas	1
Postgraduate Qualifications	2

Data Source: Data extracted from Mandatory Workforce Information Collections as on the last pay date of June 2024. As self-reported by staff in the system.

Please note: Data includes staff who are Actively employed and on extended paid leave. Please note only the highest qualification of the Teaching staff is reported. Excludes any number of other certifications earned.

## Workforce composition including indigenous staff

	Teaching Staff		Non-Teaching Staff	
	Indigenous	Non-Indigenous	Indigenous	Non-Indigenous
Full-Time Equivalents	0.0	2.1	0.0	0.4
Persons	0.0	3.0	0.0	1.0

Data Source: Data extracted from Mandatory Workforce Information Collection as on the last pay date of June 2024.

Please note: Data includes staff who are actively employed and on extended paid leave. "Indigenous category" is self-reported by staff in the system.

## Financial Statement

Funding Source	Amount
Grants: State	\$449885
Grants: Commonwealth	\$0
Parent Contributions	\$19423
Fund Raising	\$325
Other	\$0

Data Source: School supplied data.